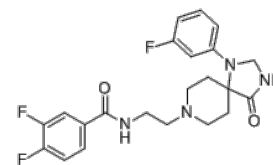


Product Name : ML298
Cat. No. : PC-62137
CAS No. : 1426916-02-0
Molecular Formula : C₂₂H₂₃F₃N₄O₂
Molecular Weight : 432.44
Target : Phospholipase
Solubility : 10 mM in DMSO



Biological Activity

ML298 is a potent, selective phospholipase **PLD2** inhibitor with IC₅₀ of 355 nM, displays >53-fold selectivity over PLD1 (IC₅₀>20 μM).

ML298 decreases invasive migration in U87-MG glioblastoma cells; has an attractive DMPK profile.

ML298 is an attractive tool compound to further dissect PLD2 function in multiple cellular and in vivo environments.

References

O'Reilly MC, et al. *J Med Chem.* 2013 Mar 28;56(6):2695-9.

Scott SA, et al. Probe Reports from the NIH Molecular Libraries Program [Internet].

Caution: Product has not been fully validated for medical applications. Lab Use Only!

E-mail: tech@probechem.com